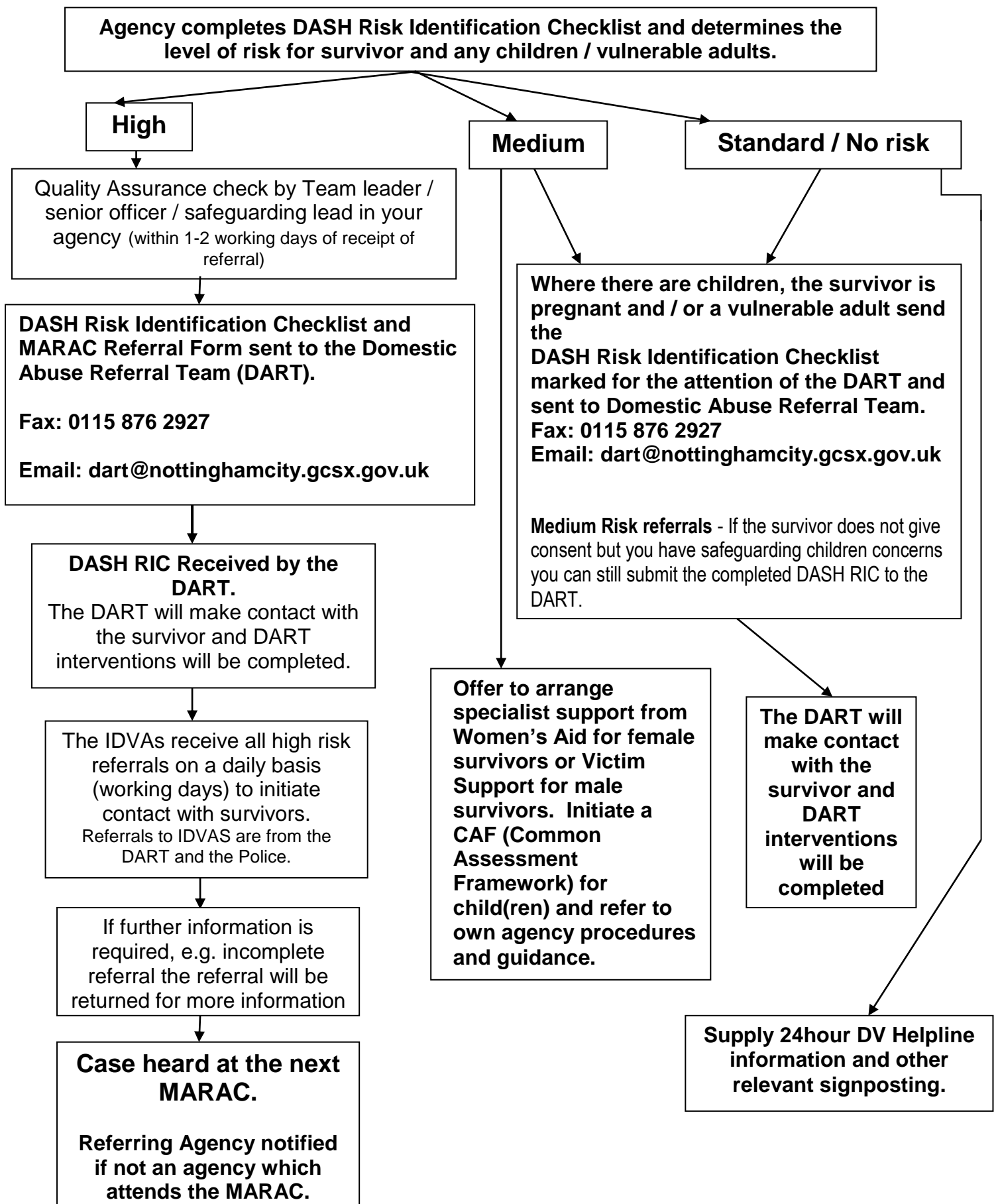


Survivor resides in Nottingham City: Domestic Abuse, Stalking, Harassment and Honour Based Violence Risk Identification Checklist (DASH RIC) referral process for agencies



Survivor resides in Nottinghamshire County: Domestic Abuse, Stalking, Harassment and Honour Based Violence Risk Identification Checklist (DASH RIC) referral process for agencies

